

RAIDON
Your Data Security Guardian

InTANK
SR2611-2S-S2R+ (6G)
User Manual

| | |
|--|----|
| » InTANK SR2611-2S-S2R+ (6G) User Manual | 1 |
| » InTANK SR2611-2S-S2R+ (6G) 產品使用說明 | 12 |

Introduction

Thank you for purchasing RAIDON products. This manual will introduce the SR2611-2S-S2R+ (Hereinafter referred to as SA2611+). Before using your SR2611+ , please read this manual thoroughly. Although all information contained in this user manual has been carefully verified before publishing, however, the actual product specification will be based on the time of delivery from RAIDON. Any updates to the product specifications or relevant information may be found on www.raidon.com.tw. Products are subject to change without prior notifications.

If you have any questions regarding the products of RAIDON, or you would like to know the latest product information, user manual update, or firmware update, please contact your local supplier or visit www.raidon.com.tw for further information.

Copyright © RAIDON TECHNOLOGY, INC. All rights reserved.

Table of Contents

1. Package Contents and Product Views
2. Operating Information
3. Hardware Requirements and Precautions
4. Hardware Installation Procedure
5. Setting RAID Mode
6. Computer Set Up
7. Hard Disk status on LCD screen LCD
8. Data Rebuilding Operation
9. GUI Monitoring Software and Firmware Update GUI
10. Frequently Asked Questions

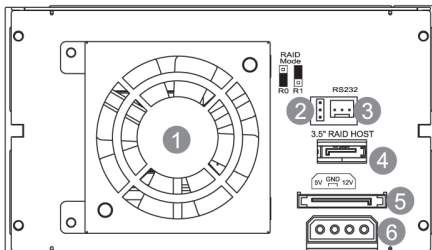
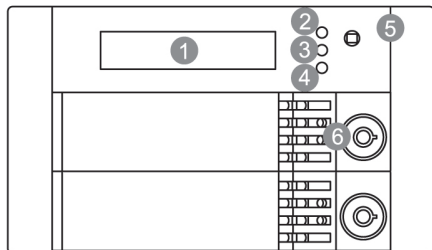
1. Package Contents and Product Views

Open the package and you should find the following:

| SR2611+ |
|--|
| SR2611+ x 1 (with removable drive tray enclosed x 2) |
| Internal RS232 Cable x 1 |
| External RS232 Cable x 1 |
| SATA Cable x 1 |
| CD x 1 |
| Accessories Kit bag x 1 |
| Quick Installation Guide x 1 |

Please make sure that the contents listed above are not damaged or missing. If you should find damages or missing contents, please contact your supplier immediately.

Product View



- | | | | |
|-------------------------|-------------------|---------------|------------------------------|
| 1. LCD Display | 4. LED of Sec HDD | 1. Fan | 4. SATA Port |
| 2. LED of Failure Alarm | 5. Mute Button | 2. RAID Mode | 5. 15 PIN Power Connector |
| 3. LED of Pri HDD | 6. Key Lock | 3. RS232 Port | 6. 4 Pin Big Power Connector |

LED Indicators :

| Status | LED | | Buzzer |
|-------------------|------------------|---------------|--------|
| | HDD | Failure | |
| Idle (No Drive) | --- | Red lights on | Alarm |
| Idle | Yellow lights on | --- | --- |
| Fan failed | --- | Red lights on | Alarm |
| HDD failed | --- | Red lights on | Alarm |
| Overheat | --- | Red lights on | Alarm |
| Accessing | Yellow lights on | --- | --- |
| Rebuilding-Source | Yellow lights on | --- | --- |
| Rebuilding-Target | --- | --- | --- |

2. Operating Information

Operating Temperature : 0 ~ 40 °C (32 ~ 104 °F)
 Storage Temperature : -10 ~ 70 °C (14 ~ 158 °F)
 Line Voltage : 5V DC

3. Hardware Requirements and Precautions

1. Computers or servers with SATA I & SATA II & SATA III.
2. Hard drive with SATA I & SATA II & SATA III
3. You are strongly advised to set the storage mode (the default is the Independent mode) before using the SR2611+.
4. The product allows the user to simultaneously utilize two hard drives manufactured by different companies. However, if the user expects better efficiency, we strongly recommend the users to use hard drives manufactured by the same manufacturer.
5. Please make sure that the two hard drives are free from bad blocks or defects prior to installation in order to avoid system crashes or data loss.
6. The actual storage capacity of SR2611+ recognized by the system may differ from the total capacity stated on the hard drives combined once the drives have been formatted.
7. It is highly recommended for users to back up important data contained within the SR2611+ unit on a regular basis or whenever the user feels necessary to a remote or a separate storage device. Raidon will not be responsible for any lost of data caused during the use of the unit or the recovery of the data lost.

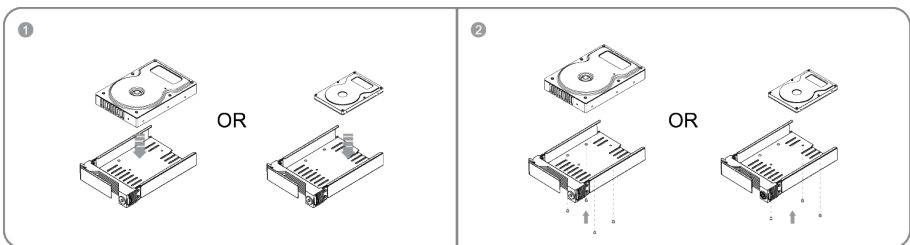
Note :

Once the drive mode configuration has been completed, re-configuration using the same hard drives to set the drive mode will result in complete data loss. If you must change the drive mode, make sure to backup all data prior to the mode change.

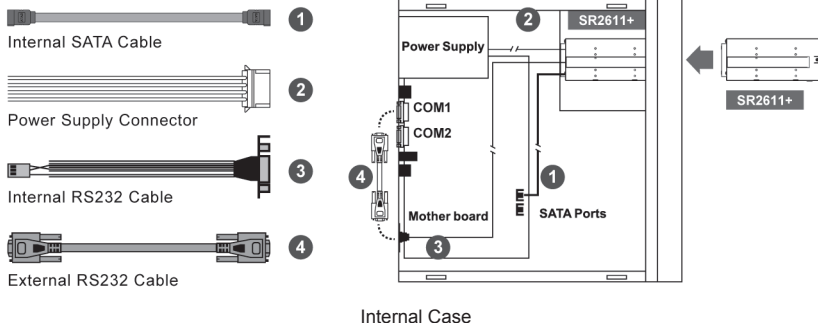
4. Hardware Installation Procedure

Please follow the instructions below to complete the hardware installation.

- Step 1** Install your hard disks into the removable trays and secure them with the screws from accessory kit. This will protect your hard disk from any unnecessary movement.



- Step 2** Once the hard disks have been installed, insert the removable trays into device and close the handles.
- Step 3** Install device into one of the CD-ROM bays with screws from the accessory kit. Then properly connect SATA cable and DC cable from your system to the device.
- Step 4** Power on your system after hardware installation is completed, and your operating system will automatically detect the hard drives from booting. Then follow the steps from your operating system to partition and format the drives when necessary, device will be ready to use once the format is completed.



Internal Case

※ Note :

1. RS232 Port and RS232 Cable: Provides hardware status monitoring to industrial control system or IPC via RS232.
2. We do not recommend users to disassemble the device without proper instructions and authorization. The manufacture warranty will not cover the damages caused by unauthorized disassembling.
3. To prevent the device from malfunction, please make sure the device is connected with a direct and dedicated power connection of a stable power input.

5. Setting RAID Mode

Please select the RAID mode with the jumper located at the back panel. The original default is RAID 1, still there are three pins at the back panel for RAID mode selection: RAID 0 mode by setting the jumper on the bottom of the two pins. RAID 1 mode by setting the jumper on the top of the two pins.



RAID 0 Mode RAID 1 Mode

1. RAID 1 Mode (default)

- 1). Insert two brand new hard drives into SR2611+.
- 2). As RAID 1 is composed of two hard drives, it can be referred to as disk mirroring, each data will simultaneously be written in two hard drives and the data in two hard drives are exactly the same. Whenever one of the hard drives is failed, the system is still able to work normally. Once the failed hard drive is replaced by a new one, SR2611+ will start auto-rebuilding.

The computing method of RAID 1 hard disk capacity:
 [total capacity] = [minimum capacity of hard drive]

Ex:

2 × 500GB HDD=500GB

1 × 500GB HDD+1× 200GB HDD=200GB

2. RAID 0 Mode

- 1). Insert two brand new hard drives into SR2611+.
- 2). The RAID 0 combines two hard drives to work as a large hard drive which provides the efficient read/write performance.

The computing method of RAID 0 hard disk capacity:

[total capacity] = [hard drive number] x [minimum capacity of hard drive]

Ex:

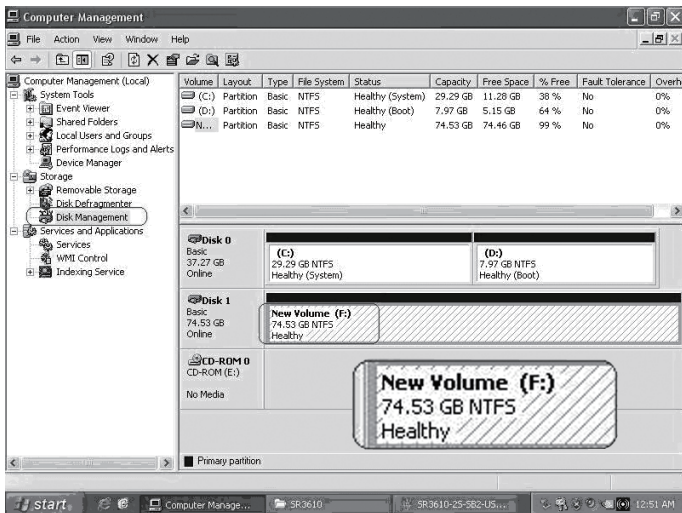
$2 \times 500\text{GB HDD} = 2 \times 500\text{GB} = 1000\text{GB}$

$1 \times 500\text{GB HDD} + 1 \times 200\text{GB HDD} = 2 \times 200\text{GB} = 400\text{GB}$

6. Computer Set Up

When the hardware setup for SR2611+ is complete, you are now ready to turn the machine on. After the hardware installation is complete, the SR2611+ will be treated as one single hard drive. Set the hard drive to AUTO in the computer's BIOS. When the computer is turned on, the system will retrieve the following information:

1. In SR2611+, the installed hard drive can be detected by the Device Manager of Computer Management for Windows.
2. Customers can choose to format the hard drive by using the Disk Management tool of the operating system before using the SR2611+.



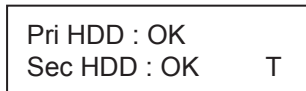
At this point, the installation process is completely finished. The user can freely retrieve and save data to SR2611+ just like retrieving and saving data to a regular hard drive. If the user experiences any abnormality during the operation, please refer to the trouble shooting Q&A section in Appendix.

7. Hard Disk status on LCD screen

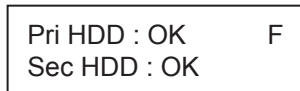
1. Booting and Normal status



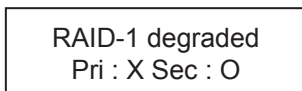
2. Over Temperature ($\geq 50^{\circ}\text{C}$)



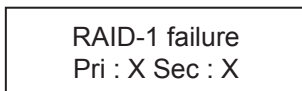
3. Fan Failure



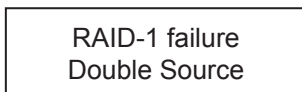
4. RAID 1 Mode. Primary hard drive is failure, but secondary hard drive is normal.



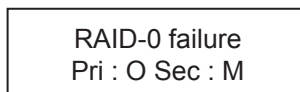
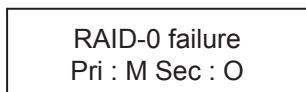
5. RAID 1 Failure. Primary and secondary hard drives are failure.



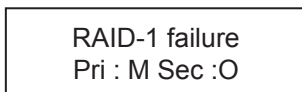
6. RAID 1 Failure (Double Source)



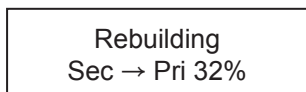
7. RAID 0 Failure. Primary or secondary hard drive is missing.



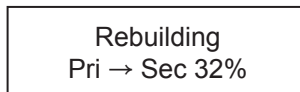
8. RAID 1 Failure. Primary hard drive is missing, but secondary hard drive is normal.



9. Rebuilding



Sec to Pri



Pri to Sec

8. Data Rebuilding Operation

The hard drive Hot Swap and Auto Rebuilding functions are available.

Off-line Back up When the data is stored within SR2611+, the user can remove one of the hard drives from SR2611+ as back up drive for data such as system operation file, secured files, seldom modified files or image and music files. The user can periodically insert the hard drive back into SR2611+ to execute automatic backup to protect the system from being hit by computer virus or to avoid risk of having both hard drives failing at the same time.

When one of the two hard drives fails in the SR2611+ system, the system will alarm the hard drive failure message both on the LCD display screen and in the monitoring software. The user can remove the failed hard drive from the system while the system is still in operation without shutting down the machine. If the failed hard drive is replaced shortly, the system will automatically execute the Auto Rebuilding function without affecting the system operation and without any operation command from the user.

When the SR2611+ detects a hard drive missing or a hard drive failure, the Buzzer will start and the LCD display screen will display the following messages:

RAID-1 degraded
Pri : X Sec : O

After removing the failed hard drive and replacing with a new hard drive, if the hard drive is properly installed, the LCD display screen will display the following messages:

Pri HDD : OK
Sec HDD : Insert

Pri HDD : Insert
Sec HDD : OK

After few seconds of installing the new hard drive, the LCD display screen will display the data rebuilding progress:

Rebuilding
Sec → Pri 32%

Rebuilding
Pri → Sec 32%

When the rebuilding is fully completed, the LCD display screen will again display the following messages:

Pri HDD : OK
Sec HDD : OK T

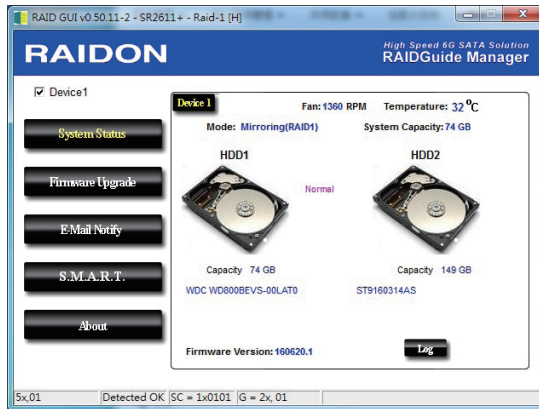
9. GUI Monitoring Software and Firmware Update

You can install GUI software to monitor the status of SR2611+. This can be done by installing software from CD.

※ The HDD1 equals to Pri HDD and HDD2 equals to Sec HDD.

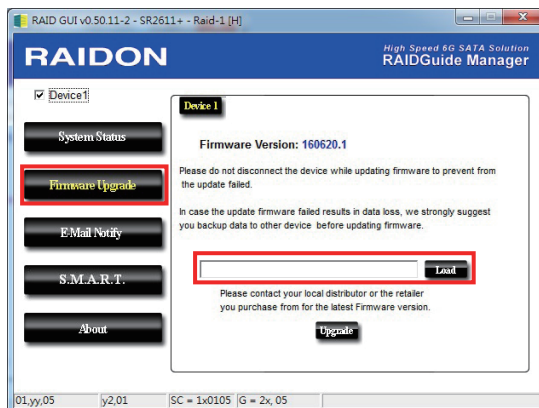
1. System Status

This GUI will auto detects the connected SR2611+ and reveals relative information accordingly.



2. Firmware Upgrade

You may update the Firmware via this GUI, simply click on “Load” button to locate the firmware file to proceed. After update is finished, you may restart the power properly to operate with newly updated firmware.



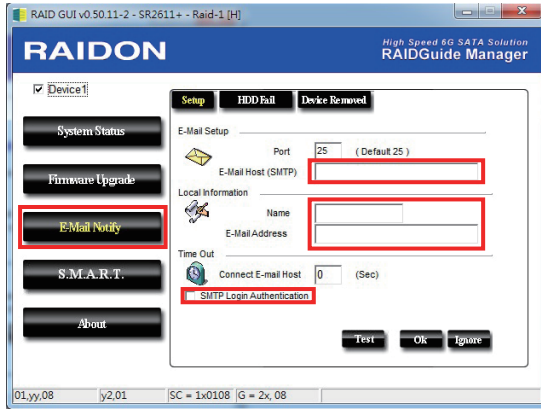
※ Caution : Any random firmware updates may cause device in malfunction, it is strongly suggested not to update device firmware if device is operating properly.

3. E-Mail Notify

Configuring an e-mail address for notification of drive malfunctioning or being removed.

3-1 Setup

- 1). Insert “Outgoing” SMTP and e-mail name and address.
- 2). If it is passwords required, select the option “SMTP Login Authentication” and insert the passwords.

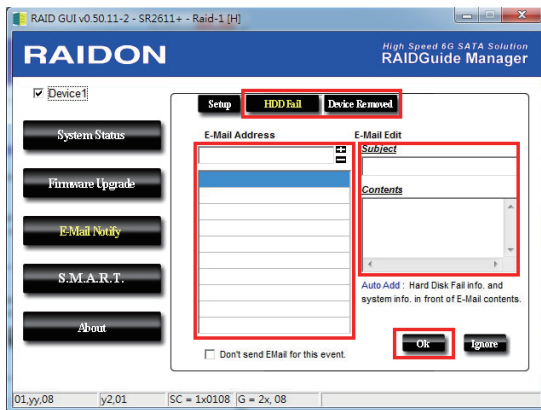


- 3). When the configuration completed, click on the “OK” button to save.

※ Device must be connected in operational states during configurations to take effects.

3-2 HDD Fail / Device Removed

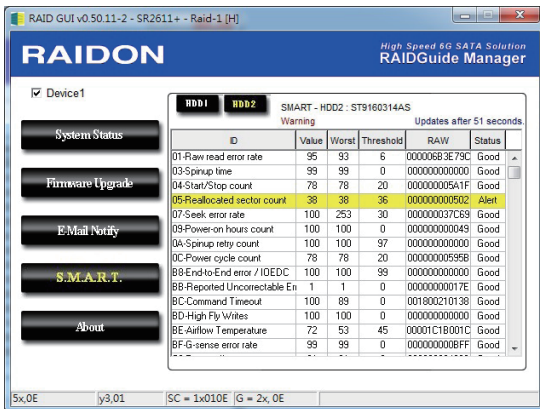
- 1). Insert the e-mail address of the receiver for notification and click on “+” to add the inserted e-mail address onto the notifying list. (Maximum up to 10 e-mail addresses)



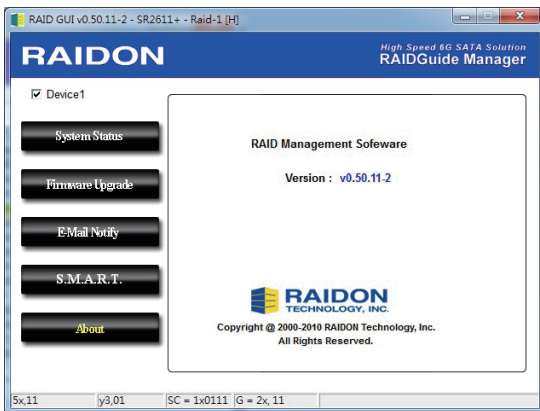
- 2). Insert the error message and descriptions from the columns of “Subject” and “Contents”.
- 3). When the configuration completed, click on the “OK” button to save.

※ Device must be connected in operational states during configurations to take effects.

4. S.M.A.R.T.



5. About Indicates GUI Management Software version



10. Frequently Asked Questions

Unstable system after connecting SR2611+

- Q1. After installing SR2611+, we are unable to start the computer or the computer can not locate SR2611+ upon startup.
- A:
1. Please check whether the readings on the SR2611+ LCD display screen appear normal.
 2. Please check whether the SATA Cable connection cables are properly connected to the computer system and whether SATA drives are functioning normally.
 3. If everything is functioning properly but the user still can not start the computer system, then the problem might be the system incompatibility. If such incompatibility takes place, please contact our technical support department.
- Q2. When the SR2611+ is in use, the computer system is functioning normally but the SR2611+ access speed is abnormal.
- A:
1. Please first check whether the SR2611+ is in the progress of executing data auto-rebuild.
 1. Please examine if the length of the connection cables, SATA cable that connect the drives to the computer system is too long and whether the specification these cables complies with the requirements.
 2. If both the lengths and specification of the cables are checked out ok, please turn off SR2611+ and remove the hard drive from SR2611+. Test the hard drive directly with the computer system since it might be the bad sectors in the hard drive that are causing the longer than normal system down time.

Hard Drive Failure

- Q1. Under the mirror mode (RAID 1), what will be the system's total storage capacity when adding a brand new hard drive?
- A:
1. The total storage capacity for SR2611+ is determined by the storage capacity of the primary hard drive installed during the initial usage.
 2. The storage capacity will not increase after initial installation even when place a brand new hard drive with larger storage capacity.
- Q2. Why does the error message appear when I installed the second hard drive?
- A: The storage capacity of the second hard drive must be larger than the first hard drive. Otherwise, SR2611+ can not rebuild the new hard drive.

About Auto Rebuilding Function

- Q1. What will happen if we turn off the computer's power while SR2611+ is still executing data auto rebuilding?
- A: he mirror mode (RAID 1), if the power is out of the auto rebuilding process, the controller will remember when completion percentage of the auto rebuilding process and resume the rebuilding process when the power is back on.
- Q2. Is it possible to lose any part of the data during the data auto rebuilding?
- A: The data auto rebuilding function will copy data from one sector to another sector. Technically speaking, the data will not be lost during the auto rebuilding process. However, if the original hard drive is detected with bad sectors during the rebuilding process, SR2611+ will make hypothetical duplication instead of treat the bad sectors as hard drive failure. Therefore, the data stored in the bad sectors could potentially be lost during rebuilding.

關於這份手冊

感謝您使用 RAIDON 的產品。本手冊將介紹 InTANK SR2611-2S-S2R+ (以下簡稱為 SR2611+) 產品。在您開始使用 SR2611+ 產品前，建議您先閱讀過本手冊。手冊裡的資訊在出版前雖已被詳細確認，實際產品規格仍將以出貨時為準；任何產品規格或相關資訊更新請您直接到 www.raidon.com.tw 網站查詢，本公司將不另行通知。若您想獲得 RAIDON 最新產品訊息、使用手冊、韌體或對 RAIDON 產品有任何疑問，請您聯絡當地供應商或到 www.raidon.com.tw 取得相關訊息。

本手冊相關產品內容歸 銳銓科技股份有限公司 版權所有

目錄索引

1. 產品外觀及包裝內容
2. 環境需求
3. 硬體需求與注意事項
4. 硬體安裝
5. 設定 RAID 層級
6. 電腦安裝
7. LCD 訊息顯示
8. 資料重建功能說明
9. GUI 功能說明與韌體更新
10. 常見問題

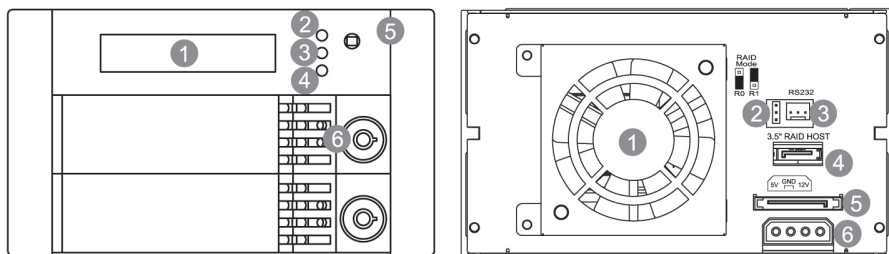
1. 產品外觀及包裝內容

打開包裝外盒後，包裝內容應包含下列組件：

| SR2611+ |
|---------------------------|
| SR2611+ 產品本體 X1(內含抽取盒 x2) |
| 內接 RS232 線 x1 |
| 外接 RS232 線 x1 |
| SATA 線 x1 |
| 光碟 x 1 |
| 零件包 x 1 |
| 快速安裝導引 x 1 |

請確認相關配件與產品本身是否有受損或配件缺少，若有任何疑問請與本產品供應商聯絡。

正面與背面示意圖



- | | | | |
|----------------|----------------|--------------|----------------|
| 1. LCD 顯示幕 | 4. Sec HDD 指示燈 | 1. 散熱風扇 | 4. SATA 埠 |
| 2. 故障警示燈 | 5. 靜音按鈕 | 2. RAID 模式設定 | 5. 15 Pin 電源接頭 |
| 3. Pri HDD 指示燈 | 6. 鎖頭 | 3. RS232 埠 | 6. 大四 P 電源接頭 |

燈號一覽表：

| 狀態 | LED | | 蜂鳴器 |
|------------|------|------|-----|
| | 硬碟燈號 | 故障燈號 | |
| 待機 (無硬碟) | --- | 紅燈恆亮 | 鳴叫 |
| 待機 (有硬碟) | 黃燈恆亮 | --- | --- |
| 風扇故障 | --- | 紅燈恆亮 | 鳴叫 |
| 硬碟故障 | --- | 紅燈恆亮 | 鳴叫 |
| 溫度過高 | --- | 紅燈恆亮 | 鳴叫 |
| 格式化 / 資料存取 | 黃燈恆亮 | --- | --- |
| 資料重建 - 來源碟 | 黃燈恆亮 | --- | --- |
| 資料重建 - 目標碟 | --- | --- | --- |

2. 環境需求

工作溫度：0 ~ 40 °C (32 ~ 104 °F)

儲存溫度：-10 ~ 70 °C (14 ~ 158 °F)

工作電壓：5V DC

3. 硬體需求與注意事項

1. 電腦或伺服器具備 SATA I、SATA II 或 SATA III 介面。
2. 具備 SATA I、SATA II 或 SATA III 介面的硬碟。
3. 強烈建議使用 SR2611+ 前設定好 RAID 模式 (預設值是 RAID 1)。
4. 本系統允許使用不同廠牌的硬碟。但如果要獲得更好的效能，我們強烈建議使用相同廠牌型號的硬碟。
5. 安裝硬碟前請先確認所使用的硬碟並無壞軌或是其他問題，以免導致系統損毀或資料遺失。
6. 硬碟格式化後，SR2611+ 的總使用儲存容量或許會與硬碟容量加總後的有所不同。
7. 強烈建議除了使用 SR2611+ 的資料儲存功能外，請針對重要資料備份到另一個儲存裝置上或遠端備份，雙重備援您重要的資料。若您儲存在 SR2611+ 的資料損毀或遺失，RAIDON 將不負任何的責任。

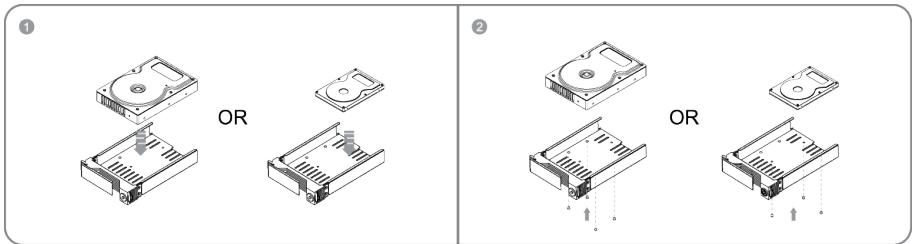
注意：

一旦使用模式確認後，使用相同的硬碟進行模式切換將會導致資料遺失。如果需要進行模式變更，請於變更前先進行資料備份。

4. 硬體安裝

請參照以下步驟完成硬體安裝

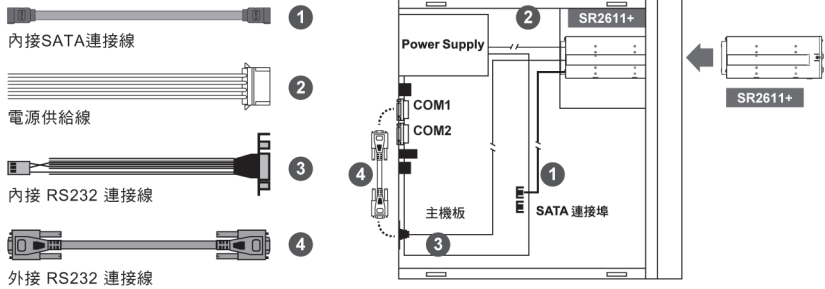
步驟 1 取出硬碟抽取盒，將硬碟安裝在硬碟抽取盒上並使用附件包裡隨附的螺絲鎖固定硬碟。



步驟 2 將兩個硬碟都依上述步驟完成安裝之後，將硬碟抽取盒置回 SR2611+ 主體中，並扣上把手。

步驟 3 將 DC12V & 5V 電源線和 SATA 連接線接到 SR2611+。

步驟 4 將 SATA 連接線接到主機板上的 SATA 連接埠。



Internal Case

※ Note :

1. RS232 埠與 RS232 線：提供工控系統或是工業電腦透過 RS232 監控硬碟狀態。
2. 我們不建議使用者在未經授權的情況下自行拆卸系統。如未經授權自行拆卸所導致的損毀將不在保固之列。
3. 為了防止系統發生問題，請確保系統的電源供應是穩定且獨立的。

5. 設定 RAID 層級

請使用背板上的 Jumper，選擇 RAID 0 或 RAID 1 模式。在 RAID 模式中有三個排針，將 Jumper 套在上面的兩個排針即為 RAID 1 模式，將 Jumper 套在下面的兩個排針即為 RAID 0 模式，原廠預設值為 RAID 1。



RAID 0 Mode RAID 1 Mode

1. RAID 1 模式 (default)

- 1). 放置 2 顆新硬碟在 SR2611+。
- 2). 兩顆硬碟進行同步寫入達到備份效果，其中一顆硬碟損壞仍可繼續運作，將損壞硬碟更換新硬碟後將會自動進行資料重建；當裝入的硬碟為 1 大 1 小時，SR2611+ 會將大容量的硬碟當成小容量的硬碟。

使用 RAID 1 的硬碟容量算法：

[總容量] = [容量最小的硬碟]

例：

2 x 500GB 硬碟 = 500GB

1 x 500GB 硬碟 + 1 x 200GB 硬碟 = 200GB

2. RAID 0 模式

- 1). 放置 2 顆新硬碟在 SR2611+。
- 2). 將 2 顆 2.5 吋或 3.5 吋硬碟容量加總，讀取效率會加快；當裝入的硬碟為 1 大 1 小時，SR2611-2S-S2R+ (6G) 會將大容量的硬碟當成小容量的硬碟。

使用 RAID 0 的硬碟容量算法：

[總容量] = [硬碟數] x [容量最小的硬碟]

例：

2 x 500GB 硬碟 = 2 x 500GB = 1000GB

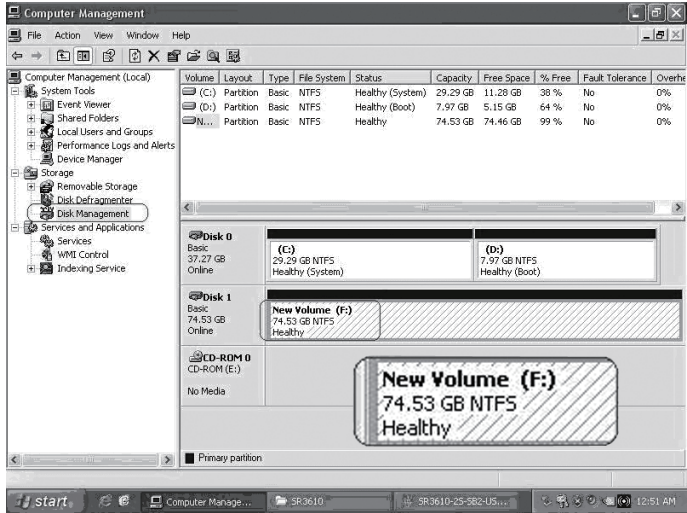
1 x 500GB 硬碟 + 1 x 200GB 硬碟 = 2 x 200GB = 400GB

6. 電腦安裝

當 SR2611+ 的硬體安裝完成，即可準備進行開機動作。

硬體安裝完成後，將 BIOS 的硬碟偵測設定為自動，SR2611+ 將會被視為如同一顆硬碟一般。當電腦開機後，系統會顯示下列偵測訊息：

1. 安裝在 SR2611+ 中的硬碟能夠被 Windows 的裝置管理員偵測到。
2. 使用 SR2611+ 前，使用者可以透過磁碟管理選擇硬碟的格式。



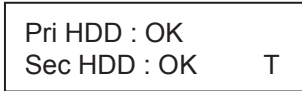
到此完成整個安裝程序。使用者可以如同存取一般硬碟般的使用 SR2611+。如果使用上仍有問題，請參閱附件的 Q&A。

7. LCD 訊息顯示

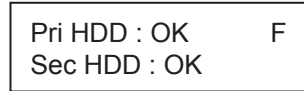
1. 開機與正常待機狀態



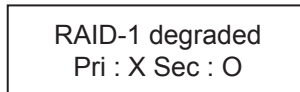
2. 溫度過高 (≥50° C)



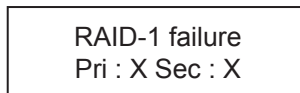
3. 風扇故障



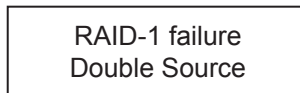
4. RAID 1 模式 · Pri 硬碟損毀而 Sec 硬碟仍然可正常存取



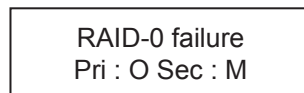
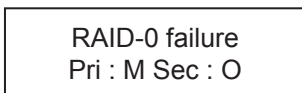
5. RAID 1 損毀 · Pri 與 Sec 硬碟皆損毀



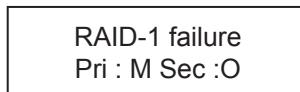
6. RAID 1 損毀 · Source 碟重複



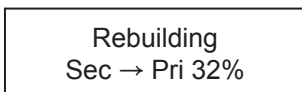
7. RAID 0 損毀 · Pri 或 Sec 硬碟遺失



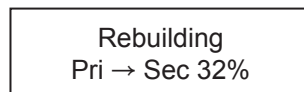
8. RAID 1 損毀 · Pri 硬碟遺失而 Sec 硬碟仍然正常



9. 資料重建



Sec to Pri



Pri to Sec

8. 資料重建功能說明

具備硬碟熱抽拔與自動資料重建功能。

離線備份。當資料儲存在 SR2611+ 後，使用者可以移除其中一顆硬碟當作資料備份碟，確保相關資料例如作業系統檔案、加密文件、較少存取的檔案甚至影音檔案的安全。使用者可以定期的將硬碟放回 SR2611+ 執行自動資料重建，確保系統不會被病毒攻擊或是減少兩顆硬碟同時損毀的風險。

當 SR2611+ 中的其中一顆硬碟損毀，系統會透過 LCD 顯示幕與監控軟體發出警示。使用者可以在系統仍在運作下，無需關掉機器即可將損毀的硬碟取出。一旦替換損毀硬碟後，SR2611+ 即會在不影響系統運作的情況下自動開始進行資料重建，使用者也無需對 SR2611+ 下任何指令。

當 SR2611+ 偵測到硬碟遺失或是損毀，蜂鳴器會啟動，LCD 螢幕會顯示以下訊息：

RAID-1 degraded
Pri : X Sec : O

當移除損毀的硬碟並替換一顆新硬碟後，如果新硬碟有正確安裝，LCD 螢幕會顯示以下訊息：

Pri HDD : OK
Sec HDD : Insert

Pri HDD : Insert
Sec HDD : OK

安裝新硬碟後幾秒鐘，LCD 螢幕會顯示資料重建的進度：

Rebuilding
Sec → Pri 32%

Rebuilding
Pri → Sec 32%

當資料重建完成後，LCD 螢幕會顯示以下訊息：

Pri HDD : OK
Sec HDD : OK T

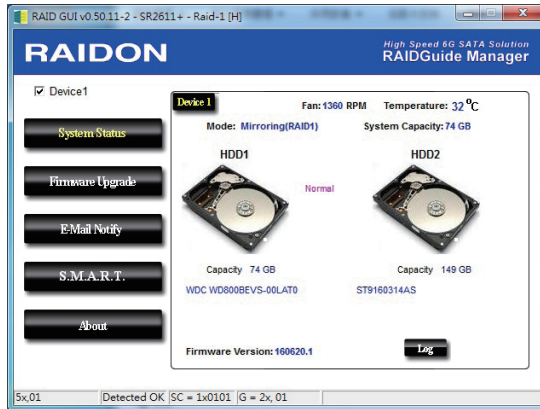
9. GUI 功能說明與韌體更新

使用者可以透過光碟來安裝 GUI 軟體，藉此監控 SR2611+ 的狀態。

※ HDD1 等於 Pri 硬碟，HDD2 等於 Sec 硬碟。

1. 系統狀態

GUI 會自動偵測 SR2611+ 並且顯示相關資訊。



2. 韌體升級

使用者可以透過此 GUI 進行韌體升級。只需簡單的點選 "Load" 指定韌體檔案位置後即可進行升級。升級過程或許需要重新啟動系統來完成整個升級程序。



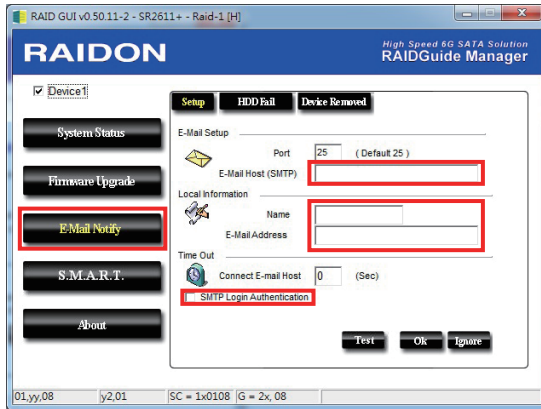
※ 注意：任意更新韌體有可能導致系統運作不正常。強烈建議如果系統運作正常情況下不要進行韌體升級。

3. E-Mail 通知

設定 e-mail 帳號來收取系統問題或被移除通知。

3-1 設定

- 1). 填入 e-mail 相關名稱與完整位置，以及 SMTP 的相關資訊。
- 2). 如果需要密碼，請勾選“SMTP Login Authentication”並輸入密碼。

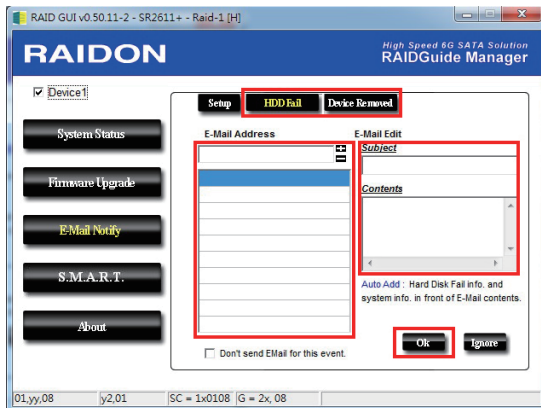


- 3). 相關資訊填寫完成後，點選“OK”。

※ 設定過程中，系統必須維持在正常運作狀態。

3-2 硬碟損毀 / 裝置被移除

- 1). 在 E-Mail Address 欄位填入要收取通知的 e-mail，點選“+”即可增加另一組。(最多可填入 10 組 e-mail)



- 2). 在“Subject”與“Contents”填入 e-mail 訊息的主旨與內容。
- 3). 相關資訊填寫完成後，點選“OK”。

※ 設定過程中，系統必須維持在正常運作狀態。

4. S.M.A.R.T.

RAID GUI v0.50.11-2 - SR2611+ - Raid-1 [H]

RAIDON High Speed 6G SATA Solution RAIDGuide Manager

Device1

System Status

Firmware Upgrade

E-Mail Notify

S.M.A.R.T.

About

SMART - HDD2: ST9160314AS
Warning Updates after 51 seconds

| ID | Value | Worst | Threshold | RAW | Status |
|------------------------------|-------|-------|-----------|---------------|--------|
| 01-Raw read error rate | 95 | 93 | 6 | 00000683E79C | Good |
| 03-Spinup time | 99 | 99 | 0 | 000000000000 | Good |
| 04-Start/Stop count | 78 | 78 | 20 | 000000005A1F | Good |
| 05-Reallocated sector count | 38 | 38 | 36 | 000000000502 | Alert |
| 07-Seek error rate | 100 | 253 | 30 | 0000000037CE9 | Good |
| 09-Power-on hours count | 100 | 100 | 0 | 000000000049 | Good |
| 0A-Spinup retry count | 100 | 100 | 97 | 000000000000 | Good |
| 0C-Power cycle count | 78 | 78 | 20 | 000000009598 | Good |
| 0B-End-to-End error / 10EDEC | 100 | 100 | 99 | 000000000000 | Good |
| 0B-Reported Uncorrectable Er | 1 | 1 | 0 | 00000000017E | Good |
| 0C-Command Timeout | 100 | 89 | 0 | 001900210198 | Good |
| 0D-High Fly Writes | 100 | 100 | 0 | 000000000000 | Good |
| 0E-Airflow Temperature | 72 | 53 | 45 | 00001C1B001C | Good |
| 0F-G-sense error rate | 99 | 99 | 0 | 0000000008FF | Good |

5x,0E | y3,01 | SC = 1x010E | G = 2x, 0E

5. 關於 GUI 軟體版本

RAID GUI v0.50.11-2 - SR2611+ - Raid-1 [H]

RAIDON High Speed 6G SATA Solution RAIDGuide Manager

Device1

System Status

Firmware Upgrade

E-Mail Notify

S.M.A.R.T.

About

RAID Management Software

Version : v0.50.11-2

RAIDON
TECHNOLOGY, INC.

Copyright © 2000-2010 RAIDON Technology, Inc.
All Rights Reserved.

5x,11 | y3,01 | SC = 1x0111 | G = 2x, 11

10. 常見問題

連接 SR2611+ 後系統不穩定

Q1. 安裝完 SR2611+ 後，電腦無法開機或是電腦認不到 SR2611+。

- A:
1. 請確認 SR2611+ 上的 LCD 螢幕顯示正常。
 2. 請確認 SATA 線有正確的跟電腦連接且硬碟是可正常運作。
 3. 如果一切正常但使用者還是無法正常開機，這有可能是因為硬體上的相容性問題。如果是硬體上相容性問題，請聯繫我們的客服部門。

Q2. 使用時，電腦運作正常但是 SR2611+ 的存取效能不正常。

- A: 請確認 SR2611+ 是否正在資料重建。
1. 請確認所使用的連接線長度，是否所使用的 SATA 線太長以及是否合乎標準規範。
 2. 如果線材的長度與規格都沒問題，請關閉 SR2611+ 並取出其中的硬碟。直接接硬碟連接到電腦並進行檢測，有可能是硬碟中的壞軌導致。

硬碟損毀

Q1. RAID 1 模式下，如果放入一顆新的硬碟，系統的總容量會是？

- A:
1. SR2611+ 的總容量是依據一開始安裝的主硬碟容量而定。
 2. 安裝完成後，即使更換一顆較大容量的硬碟，儲存容量也不會增加。

Q2. 為何當我安裝第二顆硬碟時出現錯誤訊息？

- A: 第二顆硬碟的容量必須大於第一顆硬碟，否則 SR2611+ 不會進行資料重建。

關於資料自動重建功能

Q1. 如果當 SR2611+ 在資料重建時關掉電腦電源，會不會怎樣？

- A: 在 RAID 1 模式下，資料重建過程中關閉電源，控制器會自動記憶已完成的百分比，當再度開啟電源後，重建過程會從斷電前的百分比繼續。

Q2. 資料重建過程中是否有可能會遺失資料？

- A: 資料重建功能是 Sector to Sector 的拷貝方式。技術上來說，資料並不會在資料重建過程中遺失。但是，如果資料重建過程中，原本的硬碟 (Source) 被偵測到壞軌，SR2611+ 將會採用模擬方式而不會因此壞軌認為硬碟損毀。因此，這種情況下儲存在壞軌的資料就有可能會遺失。

RAIDON
Your Data Security Guardian
www.raidon.com.tw